

Installing the Znode Storefront software

These instructions will provide the basic steps needed to install the Znode Storefront on a Windows development machine or server. Your settings may need to be adjusted slightly depending on your particular environment.

There are two ways to install the Znode Storefront. The easiest is to use our automated MSI installer. This installer will set up the database and configure IIS for you. It is most appropriate for getting set up quickly. The second option is to install this package by hand manually. Manual installation allows you to install the Znode Storefront on servers where you do not have full logon access such as a shared hosting account.

Note: If you have any issues with installation please go to www.znode.com/support and we will be happy to help you out.

1.1 Pre-Requisites

To install the Znode Storefront you need to have a good understanding of IIS and SQL Server. Znode does not provide support on general IIS and SQL Server questions. The Znode Storefront requires the following before you continue.

- IIS 6 or above.
- .Net Framework 2.0.
- SQL Server 2005 Express or above. Note that the Znode Storefront does not work with SQL Server 2000.
- Requires Full Trust on the server.
- ASP.NET 2.0 AJAX Extensions 1.0.

Note: If you have any issues with installation please go to www.znode.com/support and we will be happy to help you out.

1.2 Automated MSI Installation

Step 1: Download Software

Download Znode Storefront from <http://www.znode.com/trial> or the link that was provided when you purchased your software. Note that the trial download only includes compiled code. To get source code you need to purchase the full version licence of the Znode Storefront.

Step 2: Run the MSI Installation Program

- If you use Vista be sure to turn off the UAC (User Account Control). This setting can be found in the Control Panel under User Accounts.
- Double click on the ZnodeStorefront MSI program.
- You will see an introduction page. Click Next.
- Read the Software License Agreement, select the "I accept the license agreement" radio button and click Next.
- You will be presented with the SQL Server Connection page. Enter your own SQL Server Name in the space provided. If the SQL Server Browser service is running you can click on the Browse button to automatically find the correct string. Click Next.
- In the next step you will create the database login for the Znode Storefront. Enter a user name and password and then click Next.
- The final configuration step is to enter the name of your IIS virtual directory where the Znode Storefront will be running. Click Next.
- You will be presented with a confirmation page. You can click Back and change any of your settings at this point or you can click Next to proceed with the installation.
- The installation will take a few minutes to run. When complete you can just click Finish to exit the installer.

Step 3: Configure Permissions

If you installed the storefront on **Vista** set the following permissions for the **IUSR** account:

- Read permissions at the "Web" folder level
- Read + Write + Modify permissions at the "Web/Data" folder level

Step 4: Test the Site Configuration

- Open the storefront by going to <http://localhost/store/diagnostics.aspx> (replace "store" with the virtual directory you created during installation). Note that if you are not accessing the site through localhost the Znode Storefront may ask you to activate the license. In this case just activate the appropriate license and re-enter the URL to the diagnostics.aspx page.
- On the diagnostics page you will clearly see if you are connecting to the database and if you have the correct permissions set on your directories. If you see an error about the SMTP service not being set up correctly don't worry. You can set this up later in the Admin (see Post Install).

Step 5: Browse the Storefront

- Open the storefront by going to <http://localhost/store/default.aspx>
- The Storefront home page will be displayed with demo products.

Step 6: Administer the Storefront

- Open the storefront administration site by going to <http://localhost/store/admin/> using IE 6+ or Firefox 2.0+.
- Login with the default admin account:
 - User id = admin
 - Password = admin
- This should open the admin dashboard page. You can now start managing your catalog and orders!
- Be sure to see the [Post Install](#) suggestions in the next section.

Note: If you have any issues with installation please go to www.znode.com/support and we will be happy to help you out.

1.3 Manual Install

Step 1: Download Software

Download Znode Storefront from <http://www.znode.com/trial> or the link that was provided when you purchased your software. Note that the trial download only includes compiled code. To get source code you need to purchase the full version licence of the Znode Storefront.

Step 2: Extract the files

Extract the znodestorefront_trial.zip file to a directory on your machine or server. In this guide we will use c:\znodestorefront.

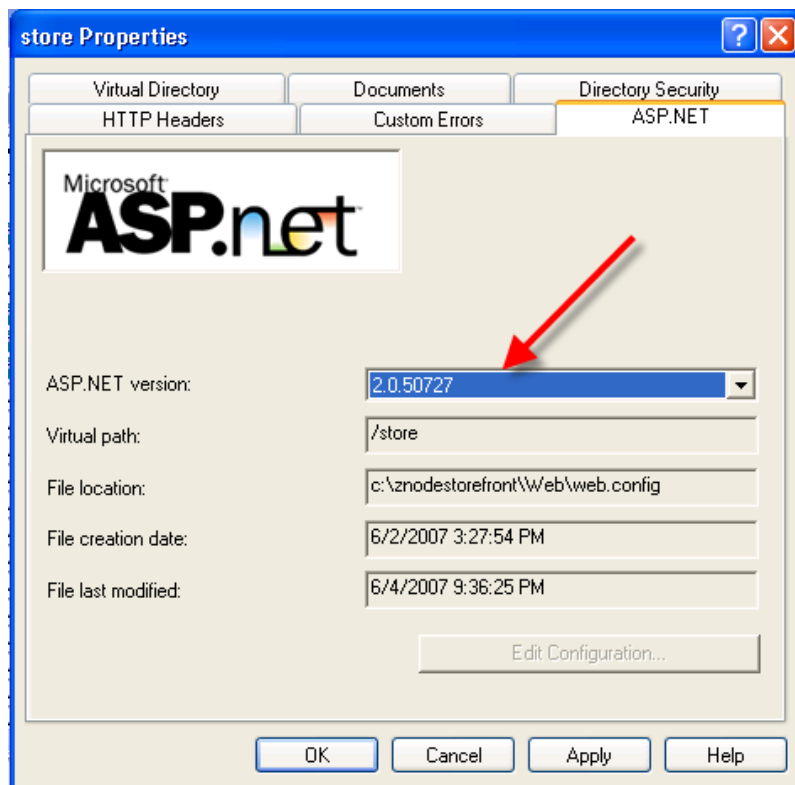
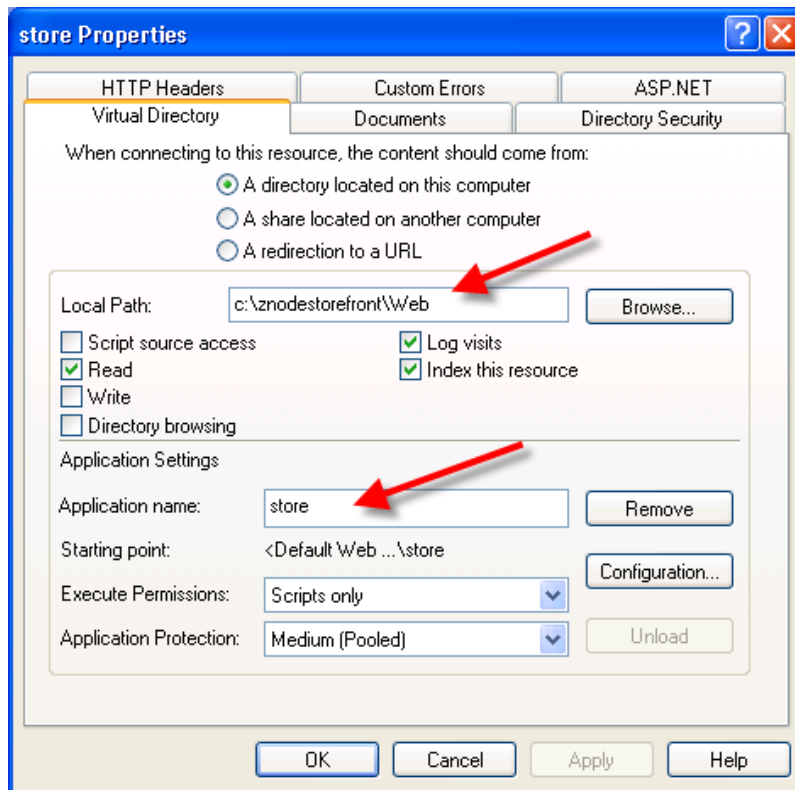
Step 3: Configure IIS

Create a Virtual Directory

- Open IIS.
- Configure a new virtual directory in IIS by right clicking on the Default Web Site and selecting New -> Virtual Directory... This will bring up the Virtual Directory Creation Wizard. Click Next in the Virtual Directory Creation Wizard.
- When prompted enter the Alias for the virtual directory. In this example we will use "**store**". Click on Next.
- In the Directory setting enter the path to the "Web" folder under your unzipped Znode Storefront. In this case it will be "**c:\znodestorefront\Web**". Click Next.
- Make sure that the Access Permissions are set to "**Read**" and "**Run scripts (such as ASP)**". Click Next.
- Click Finish in the Virtual Directory Creation Wizard.

Configure the Virtual Directory

- Under "Default Web Site" right click on your new virtual directory called "**store**" and select "Properties".
- The property page for your virtual directory should be displayed. Be sure that your store is configured as the screen shots below indicate (note that these are screen shots of IIS 6. IIS 7 will look different). The most important settings are highlighted with red arrows.
- Click on the "ASP.NET" tab of the property page.
- Under "ASP.NET version" select "**2.x.xxx**". A screen shot of what this property page should look like is below.



Step 4: Configure Permissions

Configure permissions based on your operating system as follows:

Windows XP

The **ASPNET** user should have:

- Read permissions at the "Web" folder level
- Read + Write + Modify permissions at the "Web/Data" folder level.

Windows 2003 Server

The **Network Service** account should have

- Read permissions at the "Web" folder level
- Read + Write + Modify permissions at the "Web/Data" folder level

Vista

The **Network Service** and **IUSR** account should have

- Read permissions at the "Web" folder level
- Read + Write + Modify permissions at the "Web/Data" folder level

Step 5: Install Storefront Database

- Create a new database in SQL Server 2005 called "znodestorefront".
- Add a SQL User with DBO access to this new database. You can alternatively use Windows authentication if you prefer.
- Open Query Analyzer and run the script "**znodestorefront_database.sql**" that is included with your download

Step 6: Configure Web.Config Connection String

- Open the web.config file under c:\znodestorefront\web\ for editing in Notepad or Visual Studio
- Edit the connection string to point to your new database. Change the data source, initial catalog, user id and password to the new settings. The connection string looks like this:

```
<connectionStrings>
  <add name="ZNodeECommerceDB" connectionString="Data Source=LOCALHOST\SQLEXPRESS;Initial
  Catalog=znodestorefront;user id=znodeuser;password=p@ssw0rd" />
</connectionStrings>
```

- If your SQL Server is configured to use Windows Authentication only then you should change the connection string to use Integrated security instead.

Step 7: Test the Site Configuration

- Open the storefront by going to <http://localhost/store/diagnostics.aspx> (replace "store" with the virtual directory you created during installation). Note that if you are not accessing the site through localhost the Znode Storefront may ask you to activate the license. In this case just activate the appropriate license and re-enter the URL to the diagnostics.aspx page.
- On the diagnostics page you will clearly see if you are connecting to the database and if you have the correct permissions set on your directories. If you see an error about the SMTP service not being set up correctly don't worry. You can set this up later in the Admin (see Post Install).

Step 8: Browse the Storefront

- Open the storefront by going to <http://localhost/store/default.aspx>
- The Storefront home page will be displayed with demo products.

Step 9: Administer the Storefront

- Open the storefront administration site by going to <http://localhost/store/admin/> using IE 6+ or Firefox 2.0+.
- Login with the default admin account:
 - User id = admin
 - Password = admin
- This should open the admin dashboard page. You can now start managing your catalog and orders!
- Be sure to see the [Post Install](#) suggestions in the next section.

Note: If you have any issues with installation please go to www.znode.com/support and we will be happy to help you out.

1.4 Post Install

Step 1: Basic Admin Settings

While the storefront will work with a basic install, setting the following parameters in **Global Settings** will ensure that all features of your storefront operate as expected.

- Domain Name - Enter the domain name that you will be using to access this site ("localhost" for example). This will allow the preview and send a link to a friend to use the correct links.
- Admin, Sales, and Customer Support Email Addresses - Use an email address where you will be able to receive the messages in your in box. In this way you will be able to see orders and customer requests as they come in.
- SMTP Mail Server Settings - This setting is required for any email (orders or customer requests) to be sent out from the system.
- UPS Settings - if you intend to use the UPS Shipping Option you will first need an account. If you do not have an account leave these settings blank and use a Custom Shipping Options instead.

In addition you should make sure that you have the following set.

- At least one Shipping Option.
- At least one Payment Option.

Step 2: Getting Started With Modifying the Code

Right out of the box the Znode Storefront will provide a professional and easy to use site. You can however change the code (purchased versions only) to implement just about any custom look and feel or business logic that you want. The Znode Storefront is created from the ground up to be easily modifiable. Here are just a few notes to get you started when looking at the code.

- You must be familiar with ASP.Net development using C# (VB not supported).
- You can use either Visual Studio 2005 Standard+ or Visual Studio Express to modify your code.
- The Customer pages are located in Web\Themes\Default.
- The main master page for the Customer pages is in Web\Themes\Default\Common\main.master. The look and feel for other pages are in their own directory. For example, the Home page can be found in Web\Themes\Home\home.master. All of the code behinds for these pages are in these directories as well.
- The left menu for the Admin is controlled by the Web\Admin\Web.sitemap file. To disable a menu item, such as Delete Catalog Data, just comment out the appropriate line in this file.
- Master pages for the rest of the admin pages can be found in Web\Admin\Themes\Standard.

Step 3: Before Creating a Production Catalog

Once you are done evaluating the Znode Storefront you will want to clean out all of the existing demo catalog data and start fresh with your own content. To delete the catalog data do the following steps:

- Log into the Admin.
- Choose Delete Catalog Data from the left menu.

- Click on Confirm on the next page.

Note: If you have any issues with installation please go to www.znode.com/support and we will be happy to help you out.